

THE MOST DANGEROUS INTERSECTIONS IN ARKANSAS (2026 DATA): CRASH STATISTICS & EMERGENCY RESOURCES



The Most Dangerous Intersections in Arkansas (2026 Data): Crash Statistics & Emergency Resources

Key Takeaways

- Arkansas recorded 605 fatalities and 2,720 serious injuries in 2024.
- Intersection crashes account for approximately 87 percent of analyzed roadway fatalities.
- Certain Arkansas intersections carry higher risk due to congestion and turning conflicts.
- I-40 and I-30 are among the state's most crash-prone corridors.
- The official police report is essential after any crash.

Arkansas roadways carry millions of drivers through intersections every day, many of which present far greater risk than their surroundings suggest. Crash investigations across the state consistently point to the same contributing factors: high traffic volume, driver distraction, poor sight lines, and inadequate signage converging at the same locations year after year. These are not random patterns. The **most dangerous intersections in Arkansas** share identifiable characteristics that data can reveal long before another collision occurs, and recognizing them is the first step toward making better decisions behind the wheel.

That knowledge becomes especially important when an accident does happen, and drivers find themselves navigating insurance claims, medical bills, and legal questions at one of the most stressful moments of their lives. Our team at **Taylor King Law** helps Arkansas drivers understand local crash risks and know where to turn when the road ahead gets complicated. Being **On Your Side—By Your Side** starts with making sure you have the information you need before and after a serious accident.

Arkansas Car Accident Statistics

The most recent statewide safety analysis shows 605 roadway fatalities and 2,720 serious injuries in 2024, the latest figures available in the [Arkansas Highway Safety Improvement Program \(HSIP\) 2025 Annual Report](#). These numbers represent only the most severe crash outcomes and do not capture the full volume of collisions that occur across Arkansas roadways each year.

The [HSIP report](#) also identifies intersections as one of the most consistently dangerous environments on the state's roadways. Intersection crashes, intersection-related collisions, and crashes involving non-motorists collectively account for approximately 87 percent of roadway fatalities across the major crash categories analyzed.

That risk does not distribute evenly across the state. Urban areas generate the highest total collision counts due to traffic density and signalized intersections, while rural roadways tend to produce more severe outcomes because of higher travel speeds and longer emergency response times.

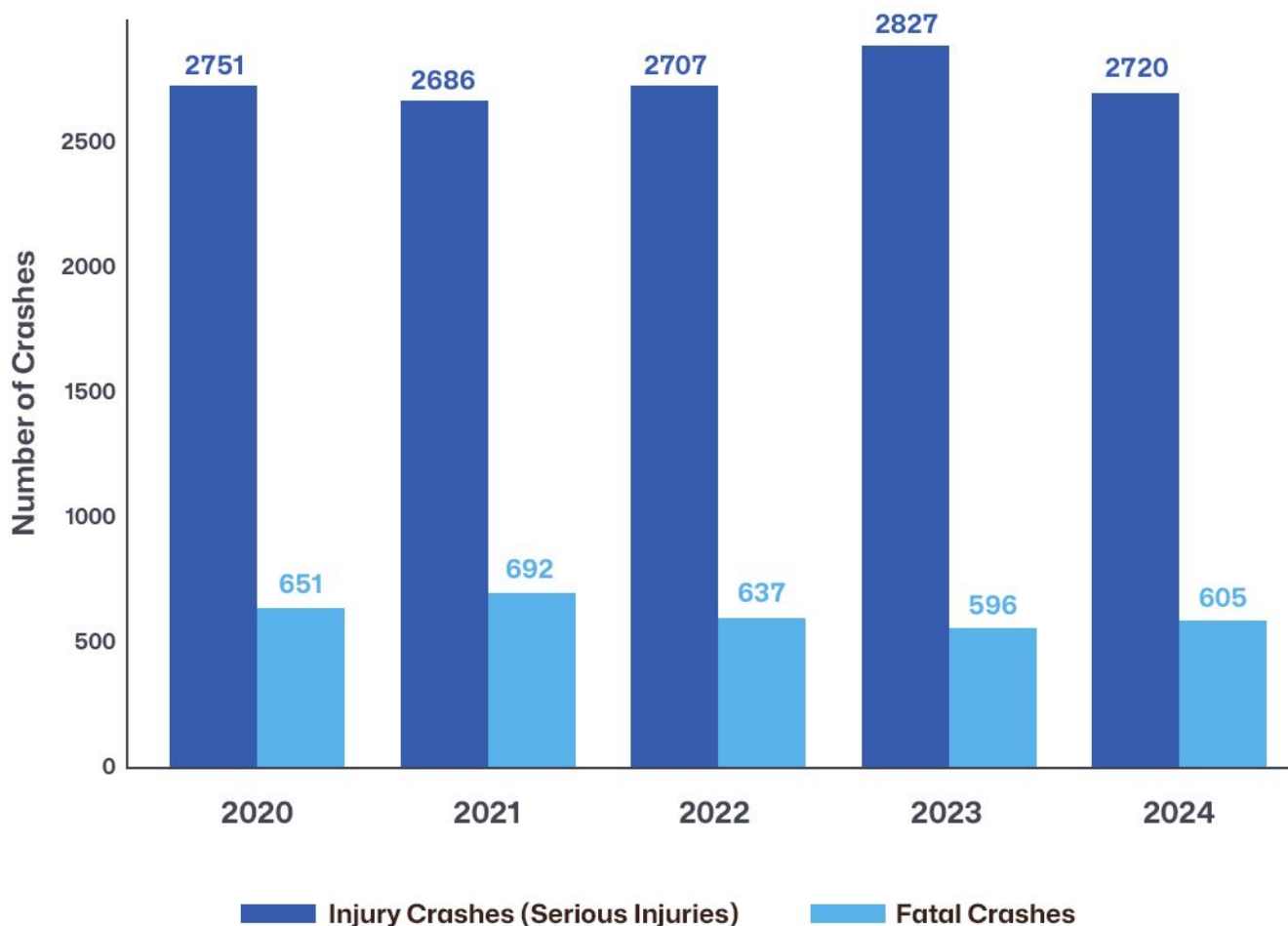
Across both environments, the same contributing factors appear repeatedly in crash investigations:

- Distracted Driving
- Speeding
- Failure to Yield at Intersections
- Impaired Driving
- Unsafe Turning Movements
- Running Red Lights or Disregarding Traffic Signals
- Aggressive or Reckless Driving Behavior

These patterns have remained largely consistent over time despite ongoing safety efforts across the state, as reflected in the statewide crash figures below:

Year	Injury Crashes (Serious Injuries)	Fatal Crashes
2020	2,751	651
2021	2,686	692
2022	2,707	637
2023	2,827	596
2024	2,720	605

Arkansas Serious Injury and Fatal Crashes by Year



As population growth, expanding development, and increasing freight traffic continue placing additional pressure on Arkansas roadways, these numbers are unlikely to improve without a clearer understanding of where and why serious crashes occur. Transportation planners use this data to identify locations where signal timing upgrades, protected turn lanes, improved lighting, and redesigned traffic flow patterns could reduce serious outcomes for Arkansas drivers.

Understanding these patterns also matters for drivers and families navigating the aftermath of a serious collision, when knowing where liability concentrates and what factors contributed to a crash can make a meaningful difference in a personal injury claim.



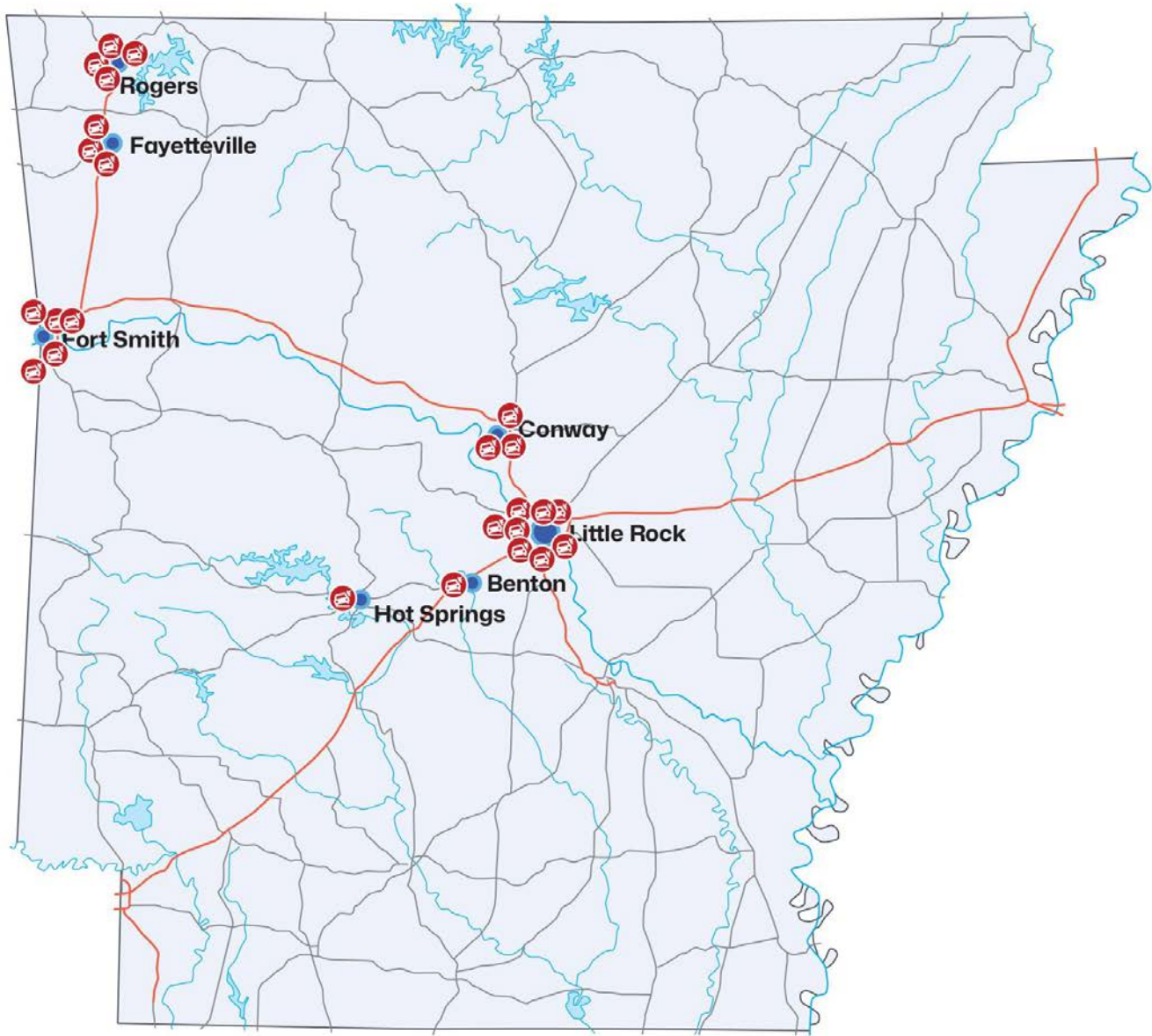
The 25 Most Dangerous Intersections in Arkansas

Busy intersections create the highest risk for a serious car accident because drivers must react to traffic signals, turning vehicles, pedestrians, and multiple lanes of traffic at once. When congestion increases along major retail corridors or commuter routes, the number of potential conflict points between vehicles rises sharply. The **most dangerous intersections in Arkansas** share identifiable characteristics, including high traffic volume, frequent turning movements, and limited reaction time, that make them consistently more prone to serious collisions.

These conditions are not evenly distributed across the state; they tend to concentrate along major commercial corridors, interstate access points, and rapidly growing urban areas where traffic demand has outpaced roadway capacity.

The following intersections appear among the busiest and most collision-prone traffic corridors in Arkansas:

The 25 Most Dangerous Intersections in Arkansas



Rank	Intersection	City	Common Crash Factors
1	Shackleford Rd & Markham St	Little Rock	Heavy retail traffic, multiple turning lanes
2	Rodney Parham Rd & Markham St	Little Rock	Retail entrances, signal congestion
3	University Ave & Markham St	Little Rock	High commuter traffic volume
4	Cantrell Rd & Mississippi St	Little Rock	High speeds, turning conflicts
5	Walton Blvd & Pleasant Grove Rd	Rogers	Retail congestion, interstate access
6	Joyce Blvd & College Ave	Fayetteville	University traffic, pedestrian crossings
7	Rogers Ave & Phoenix Ave	Fort Smith	Major commuter corridor
8	Central Ave & Higdon Ferry Rd	Hot Springs	Tourism traffic, congestion
9	Highland Dr & College Ave	Fayetteville	Campus traffic patterns
10	Dave Ward Dr & Broadway St	Conway	Rapid population growth, commuter traffic
11	Chenal Pkwy & Bowman Rd	Little Rock	Retail development, multiple lanes
12	Geyer Springs Rd & Baseline Rd	Little Rock	High traffic density
13	Rogers Ave & Towson Ave	Fort Smith	Freight and commuter traffic
14	Walton Blvd & New Hope Rd	Rogers	Retail corridor congestion
15	Cantrell Rd & Sam Peck Rd	Little Rock	Turning conflicts, heavy traffic
16	Markham St & University Ave	Little Rock	Dense urban commuter route

17	Phoenix Ave & Rogers Ave	Fort Smith	Signal congestion
18	Oak St & Joyce Blvd	Fayetteville	Retail access traffic
19	Dave Ward Dr & Salem Rd	Conway	Commuter congestion
20	Pleasant Grove Rd & Pinnacle Hills Pkwy	Rogers	Commercial development traffic
21	Highland Dr & Garland Ave	Fayetteville	Campus traffic
22	Chenal Pkwy & Rahling Rd	Little Rock	High traffic volume
23	Rogers Ave & Waldron Rd	Fort Smith	Turning conflicts
24	Airport Rd & Military Rd	Benton	Highway access traffic
25	Walnut St & Walton Blvd	Rogers	Retail congestion

A closer look at the top ten reveals the specific traffic patterns, congestion factors, and driving conditions that make each one particularly dangerous. These are not isolated problem spots but locations where multiple risk factors consistently overlap, creating environments where serious collisions are far more likely than average:

1. **Shackleford Road and Markham Street, Little Rock:** Located in one of Little Rock's busiest commercial corridors, this intersection experiences constant turning traffic as drivers enter and exit nearby shopping centers.
2. **Rodney Parham Road and Markham Street, Little Rock:** Heavy retail traffic and multiple signal cycles already create congestion along this corridor, and a blind hill paired with a restricted right turn on red adds another layer of risk.
3. **University Avenue and Markham Street, Little Rock:** This major commuter route connects residential neighborhoods with downtown Little Rock, where shopping centers on three corners and a hospital on the fourth keep traffic volume consistently high.
4. **Cantrell Road and Mississippi Street, Little Rock:** Fast-moving traffic along Cantrell Road combined with frequent turning vehicles creates limited reaction time for drivers.
5. **Walton Boulevard and Pleasant Grove Road, Rogers:** Located near major retail developments, this intersection experiences heavy congestion during evenings and weekends.

6. **Joyce Boulevard and College Avenue, Fayetteville:** University traffic combines with retail activity and pedestrian crossings, creating complex driving conditions.
7. **Rogers Avenue and Phoenix Avenue, Fort Smith:** One of the busiest traffic corridors in Fort Smith, with heavy commuter traffic and multiple turning lanes during peak weekday travel hours.
8. **Central Avenue and Higdon Ferry Road, Hot Springs:** Tourism traffic moving between hotels, restaurants, and attractions often leads to sudden stops and lane changes.
9. **Highland Drive and College Avenue, Fayetteville:** Proximity to university housing increases both pedestrian activity and vehicle congestion throughout the academic year and weekends.
10. **Dave Ward Drive and Broadway Street, Conway:** Rapid population growth and commuter traffic continue increasing congestion along this major Conway corridor.

Drivers traveling through these corridors should remain especially alert near signalized intersections, where sudden stops, turning vehicles, and lane changes frequently increase the risk of a serious car accident.

Why These Intersections Are So Dangerous

The **most dangerous intersections in Arkansas** share more than a high crash count. Several common conditions explain why crashes occur at these locations with greater frequency than others:

- High traffic volume creates congestion during morning and evening commutes, leaving drivers with less time and space to react.
- Frequent turning movements increase the risk of side-impact collisions, particularly at intersections with multiple turning lanes.
- Commercial development introduces multiple entrance and exit points in close proximity to signals, forcing quick decisions with little margin for error.
- Driver distraction from navigation systems or mobile devices further reduces reaction time at already complex intersections.
- Complex signal timing and multi-lane roadways can cause confusion during lane changes, increasing the likelihood of sideswipe and merging collisions.

When these conditions converge at the same location, the risk for drivers, passengers, and pedestrians rises significantly. For those injured at these intersections, understanding what contributed to the crash can make a meaningful difference in pursuing a claim.

The Most Dangerous Highways and Interstates in Arkansas

Arkansas highways carry long-distance traffic, freight transportation, and commuter flow across large regions, creating conditions where crash risk extends far beyond city intersections. Individual crash reports published by the [Arkansas Department of Public Safety](#) reveal several corridors that appear with striking regularity, pointing to stretches of road where the combination of speed, volume, and road conditions makes serious accidents far more likely:

1. **Interstate 40:** Stretching across Arkansas from west to east, I-40 carries heavy freight traffic statewide. High truck volumes, long travel distances, and changing weather conditions increase crash exposure.
2. **Interstate 30:** This corridor connects Little Rock with Dallas-area traffic routes. Urban congestion near the capital city contributes to frequent rear-end collisions and multi-vehicle crashes.
3. **Interstate 49:** Growth in Northwest Arkansas has led to rising commuter traffic along I-49. Construction zones and rapid population expansion continue to increase collision risk.
4. **Highway 67/ 167:** Drivers travel at high speeds through rural stretches of this corridor. Limited lighting and wildlife crossings contribute to serious accidents away from urban centers.
5. **Highway 65:** This corridor passes through mountainous terrain where curves, elevation changes, and seasonal tourist traffic increase crash risk during busy travel periods.

Drivers traveling these corridors should remain especially cautious, maintain safe following distances, and stay alert to sudden traffic slowdowns, changing weather, and heavy commercial truck activity.

Arkansas Hospitals Near High-Risk Crash Areas

When a serious collision occurs at a dangerous intersection or along a high-crash highway, access to trauma care can be the difference between recovery and lasting harm. The following trauma centers across Arkansas are equipped to handle severe injuries from car accidents:

UAMS Medical Center

- 4301 West Markham Street, Little Rock, AR 72205
- Phone: (501) 686-7000
- Level 1 Trauma Center

Baptist Health Medical Center Little Rock

- 9601 Interstate 630, Exit 7, Little Rock, AR 72205
- Phone: (501) 202-2000
- Level 2 Trauma Center

CHI St. Vincent Infirmary

- 2 St. Vincent Circle, Little Rock, AR 72205
- Phone: (501) 552-3000
- Level 2 Trauma Center

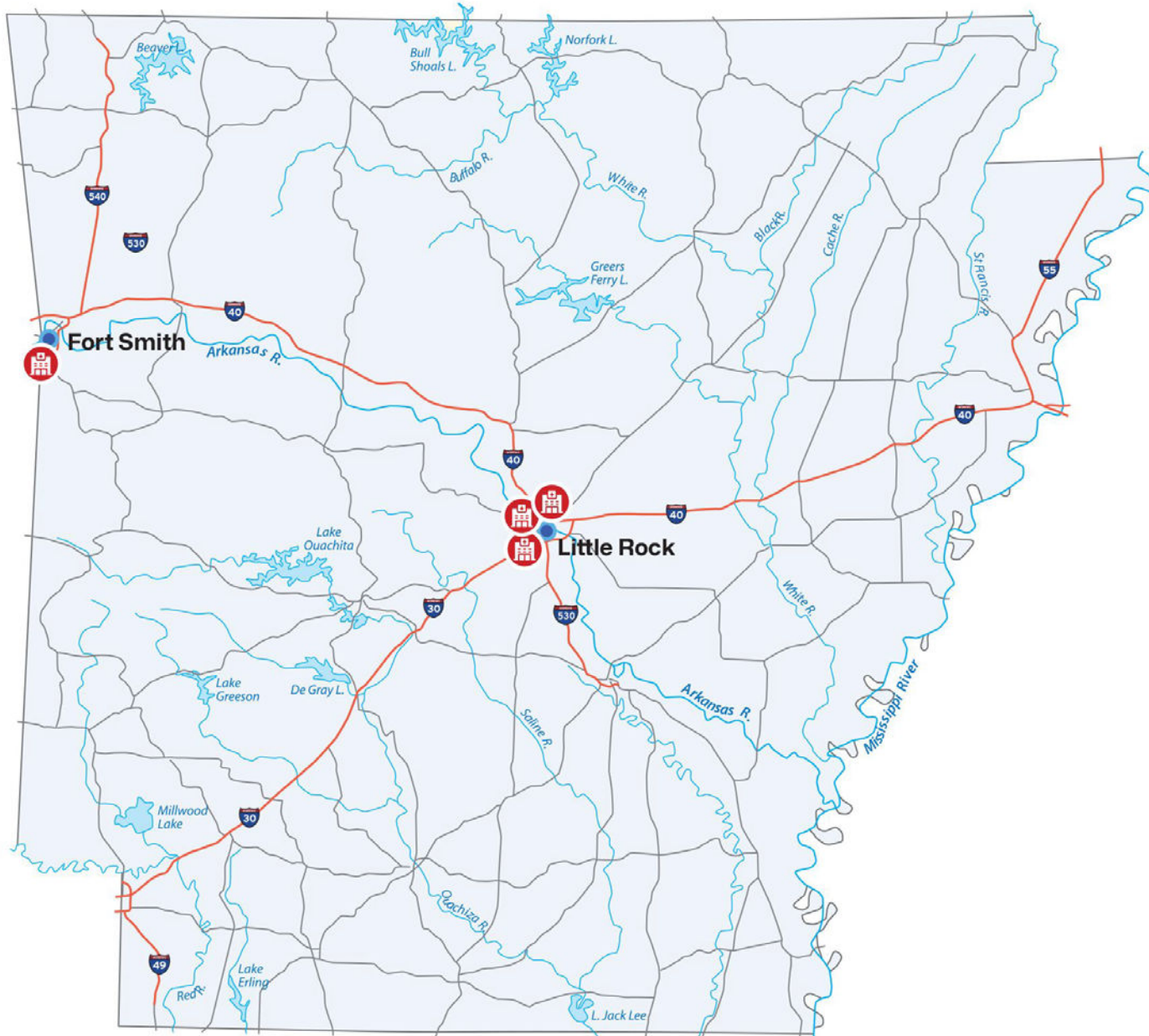
Washington Regional Medical Center

- 3215N North Northhills Blvd, Fayetteville, AR 72703
- Phone: (479) 463-1000
- Level 2 Trauma Center

Mercy Hospital Fort Smith

- 7301 Rogers Avenue, Fort Smith, AR 72903
- Phone: (479) 314-6000
- Level 3 Trauma Center

Arkansas Hospitals Near High-Risk Crash Areas



Seeking prompt medical care after a car accident not only protects your health but also creates medical documentation that may be critical for a personal injury claim.

Seeking immediate medical care after a car accident does more than protect physical health; it creates documented medical records that connect injuries directly to the crash, which plays a critical role in supporting a personal injury claim.

Police Departments Serving High Crash Areas

Local law enforcement agencies investigate traffic collisions and produce the official crash reports required during insurance claims or personal injury lawsuits. The following agencies serve some of Arkansas's highest-traffic corridors and can provide documentation critical to any accident claim:

Arkansas State Police

- Central repository for statewide crash reports.
- Crash report request portal: <https://portal.arkansas.gov/service/crash-reports/>

Little Rock Police Department

- Non-emergency phone: (501) 371-4829
- Crash report requests: <https://littlerock.gov/residents/police-department/contact-us/reports/>

Fayetteville Police Department

- Non-emergency phone: (479) 587-3555
- Crash report requests: <https://www.fayetteville-ar.gov/3424/Accident-Report-Request>

Fort Smith Police Department

- Non-emergency phone: (479) 709-5000
- Crash report requests: <https://dps.arkansas.gov/law-enforcement/arkansas-state-police/services-programs/crash-records/>

If you were injured at any of these locations, obtaining the crash report quickly is one of the most important steps you can take to protect your claim. An experienced Arkansas car accident lawyer can help you secure that documentation and build a case around it from day one.

Arkansas Courts Handling Car Accident Lawsuits

When a car accident claim cannot be resolved through insurance negotiations, civil litigation becomes the next step. In Arkansas, personal injury lawsuits typically proceed through state circuit courts in the county where the crash occurred or where one of the parties resides. The courts most commonly handling these cases include:

- Pulaski County Circuit Court
- Sebastian County Circuit Court
- Washington County Circuit Court
- Faulkner County Circuit Court

Once a lawsuit is filed, the process moves through several defined stages. The injured party files a complaint outlining their injuries, damages, and legal claims. The defendant responds, and both sides exchange evidence through discovery. Settlement negotiations frequently take place before the case ever reaches trial, though preparation for litigation often strengthens a claimant's position at the negotiating table.

Filing deadlines matter in Arkansas. [Under Arkansas Code § 16-56-105](#), injured individuals generally have three years from the date of the crash to file a personal injury lawsuit, though exceptions may exist depending on the circumstances surrounding the case. For those hurt at the **most dangerous intersections in Arkansas**, missing that deadline can permanently bar the right to pursue compensation, which is why contacting an Arkansas car accident lawyer early in the process is critical.

What To Do If You're Involved in a Crash at a Dangerous Intersection

The moments following a car accident at one of the **most dangerous intersections in Arkansas** are critical. Decisions made in that window can shape both the outcome of a medical recovery and the strength of a future injury claim. Taking the right steps early helps protect both:

- Call emergency services immediately so police and medical responders can secure the scene and document what happened.
- Seek medical evaluation even if injuries seem minor, as symptoms from head trauma or internal injuries can take hours to appear.
- Photograph the scene before it is cleared, capturing vehicle positions, traffic signals, skid marks, and any visible injuries.
- Exchange insurance and contact information with all drivers involved in the collision.
- Gather contact details from any witnesses who observed the crash.
- Request a copy of the official crash report from the law enforcement agency that responded.
- Contact a car accident lawyer before accepting any settlement offer from an insurance company.

Evidence disappears, memories fade, and insurance companies move fast after an accident. Acting quickly and thoroughly matters even more in Arkansas, where comparative fault rules allow insurers to argue shared responsibility in order to reduce what an injured driver can recover. Solid documentation from the crash scene, combined with early legal guidance, gives injured drivers the strongest possible foundation for a claim.

Injured at One of Arkansas' Most Dangerous Intersections?

When a crash at a dangerous intersection leaves you facing medical bills, missed work, and uncertainty about what comes next, having the right legal team makes a difference. At **Taylor King Law**, we are **On Your Side—By Your Side** through every step of the process. Our team investigates collision evidence, reviews police reports, and works to build the strongest possible case for injured drivers across Arkansas.

If you or someone you love was injured at one of the **most dangerous intersections in Arkansas**, call us today at **870-246-0505** for a free consultation and learn how our team can help your case.